



# Electronic Service Manuals

This electronic document is provided as a service to our customers. We do not create the contents of the information contained in this document. Should you have detailed questions pertaining to the information contained in this document, you may contact Michco, or the manufacturer which provided the original information in this electronic deliverable. Michco's only part in this electronic deliverable was the electronic assembly process.

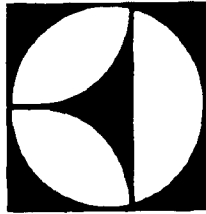
You may contact Michco through the following methods:  
Phone (517) 484-9312 or (800) 331-3339 MI, OH, IN only  
2011 N. High St. -- Lansing, Michigan -- 48906  
Fax: (517) 484-9836  
Email: [CustServ@Michco.com](mailto:CustServ@Michco.com)  
Web site: [www.Michco.Com](http://www.Michco.Com)  
Parts Web site: [www.FloorMachineParts.Com](http://www.FloorMachineParts.Com)

Order Parts on Line at:  
**[www.FloorMachineParts.Com](http://www.FloorMachineParts.Com)**

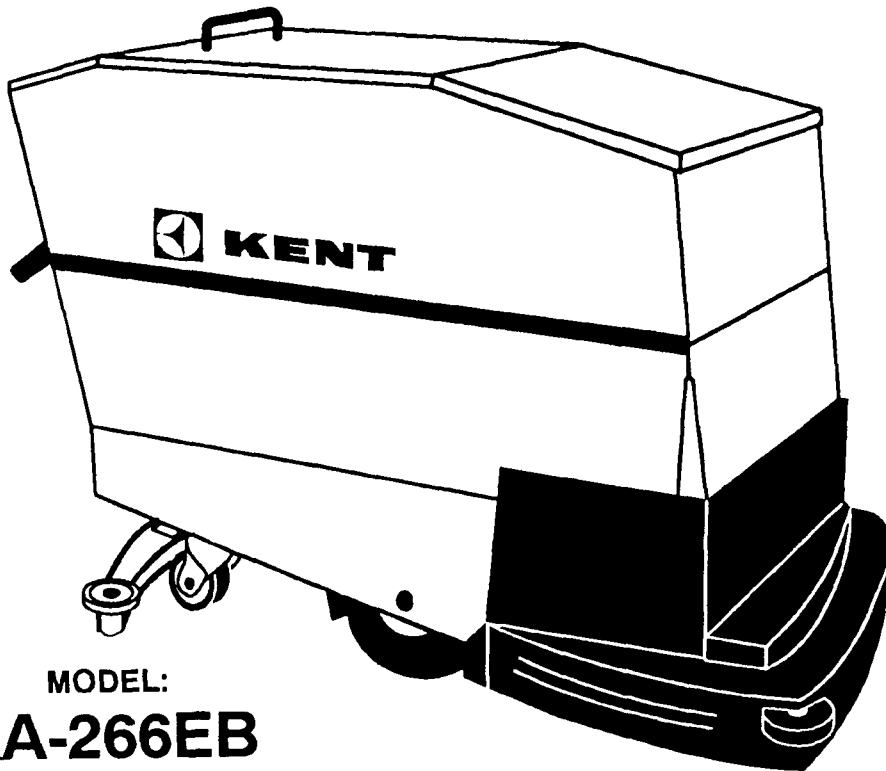
Directly to Parts & Service:  
By Email: **[Shop@Michco.com](mailto:Shop@Michco.com)**  
By Fax: (517) 702-2041  
By Voice: Use numbers above.

**Serving the Cleaning Industry Since 1922**

Notice: All copyrighted material remains property of original owners, all trademarks are property of respective owners. Manuals are subject to Manufacturer's reproduction limitations. Originals or reproductions were provided by manufacturers through a request. We make no warranty as to the correctness of information provided in this document and you assume all risk.



# KENT



MODEL:  
**KA-266EB**  
**KA-326EB**  
**AUTOMATIC**  
**SCRUBBERVACS**

THE KENT COMPANY  
P.O. Box 1665  
2310 Industrial Parkway  
Elkhart, IN 46515  
TEL: (219)293-8661,  
(800)334-1083  
FAX: (219)295-8610

~~TELEX: 25 8301 KENT CO EKH~~

**OPERATING,  
MAINTENANCE  
INSTRUCTIONS  
& ILLUSTRATED  
PARTS LIST**

JUNE 1992

**MACHINE SPECIFICATIONS:**

**KA-266EB**

**KA-326EB**

CONTROLS.....	Light effort push/pull for forward or reverse operation. All switches, manual water control, and manual brush lift lever easy to reach, hand operable.	Light effort push/pull for forward or reverse operation. All switches, manual water control, and manual brush lift lever easy to reach, hand operable.
TRACTION MOTOR.....	36V, 3/4HP, 700 RPM Permanent Magnet type.	36V, 3/4HP, 700 RPM Permanent Magnet type.
VACUUM MOTOR.....	36V, 3/4HP, 2-stage bypass type.	36V, 3/4HP, 2-stage bypass type.
BRUSH DRIVE MOTORS (2).....	36V 3/4HP, 195 RPM Permanent Magnet type gear motor. Direct Drive to self-leveling brushes.	36V 3/4HP, 195 RPM Permanent Magnet type gear motor. Direct Drive to self-leveling brushes.
TRACTION DRIVE.....	Chain direct drive to differential.	Chain direct drive to differential.
BRUSHES.....	Dual 13-1/2" (34.3 cm) dia., self-leveling counter-rotating, 195RPM.	Dual 17" (43.2 cm) dia., self-leveling counter-rotating, 195RPM.
SCRUBBING WIDTH.....	26" (66 cm).	32" (81.3 cm).
BRUSH PRESSURE.....	106 lbs. (48 kg) floating 180 lbs. (73 kg) strip	110 lbs. (49.9 kg) floating 185 lbs. (88.5 kg) strip
TANKS.....	21 gal. (79.5L) capacity each, high density, molded seamless linear polyethylene with 2" (5.1 cm) dump valve for each.	27 gal. (102.2L) capacity each, high density, molded seamless linear polyethylene with 2" (5.1 cm) dump valve for each.
BATTERIES.....	Six heavy-duty deep cycle type, 6V, 200AH series connected.	Six heavy-duty deep cycle type, 6V, 270AH series connected.
SQUEEGEE.....	32.75" (83.2 cm) wide, swinger type with cast-in vacuum tube, easily replaceable gum rubber blades (reversible for extended wear), arcuate shape, superior tracking center wheel design, positive height adjustment and pivot makes squeegee self-leveling on turns.	36.75" (96.4 cm) wide, swinger type with cast-in vacuum tube, easily replaceable gum rubber blades (reversible for extended wear), arcuate shape, superior tracking center wheel design, positive height adjustment and pivot makes squeegee self-leveling on turns.
WHEELS.....	Two 11" (27.9 cm) dia. pneumatic traction tires - front. Two 5" (12.7 cm) dia. polyurethane swivels - rear.	Two 11" (27.9 cm) dia. pneumatic traction tires - front. Two 5" (12.7 cm) dia. polyurethane swivels - rear.
SOLUTION FEED.....	Adjustable flow rate to center of each brush.	Adjustable flow rate to center of each brush.
FLOAT.....	20 amp hermetically sealed, mercury type with PVC outer shell.	20 amp hermetically sealed, mercury type with PVC outer shell.
FRAME.....	All welded steel 1/4" (0.6 cm) flat plates, angle and square stock.	All welded steel 1/4" (0.6 cm) flat plates, angle and square stock.
OUTER SHELL.....	All exterior panels 16 Ga. brushed stainless steel.	All exterior panels 16 Ga. brushed stainless steel.
BRUSH COVER.....	High density molded seamless linear polyethylene.	High density molded seamless linear polyethylene.
BATTERY CHARGER.....	Exterior - Electronic, 20 Amp, 36V	Exterior - Electronic, 20 Amp, 36V
LENGTH (OVERALL).....	56-1/2" (151 cm)	62-1/2" (158.7 cm)
HEIGHT (OVERALL).....	36-1/2" (100.3 cm)	39-1/2" (100.3 cm)
WIDTH (BODY).....	23-1/2" (59.7 cm)	25-1/2" (64.8 cm)
WIDTH (BRUSH COVER).....	30" (76.2 cm)	35" (88.9 cm)
WIDTH (SQUEEGEE).....	32.75" (83.2 cm)	36.75" (96.4 cm)
WEIGHT (MACHINE W/BATTERIES).....	850 lbs. (389.6 kg)	1,064 lbs. (482.6 kg)
WEIGHT (CHARGER).....	22 lbs. (9.9 kg)	22 lbs. (9.9 kg)
SHIPPING WEIGHT (TOTAL).....	1,079 lbs. (489.4 Kg)	1,237 lbs. (561.1 Kg)

<b>THE KENT CO.</b>		
ELKHART, INDIANA USA		
SERIAL NO.		MODEL
VOLTS	PHASE	Hz
MOTOR 1	AMP	Hz
MOTOR 2	AMP	Hz

The model, type and serial number are indicated on the data plate. For prompt and complete information, always refer to these numbers when inquiring about service.

<b>WRITE THE MODEL AND SERIAL NUMBER OF YOUR UNIT IN THE SPACE PROVIDED.</b>	
MODEL #	SERIAL #
RETAIN THIS OWNER'S GUIDE FOR FUTURE REFERENCE.	

**AUTOMATIC SCRUBBER ACCESSORIES**

**KA-266EB KA-326EB**

PADHOLDER-LEFT/RIGHT	20347/20376	20346/20377
PADHOLDER SERVICE PARTS:		
CENTER PLATE (ATTACHED)L/R	38881/38390	38881/38390
CLAMPING PLATE (LOOSE)L/R	38882/38391	38882/38391
STRIP PAD	15659	15656
SCRUB PAD	15660	15657
POLISH PAD	15661	15658
SCRUB BRUSH	20274	20288
POLISH BRUSH	20275	20272
NYLON BRUSH	20276	20271
STEEL WIRE BRUSH	20278	20273
KEN-GRIT BRUSH	20297	20298
MICROSTAT FILTER KIT	38303	38303
FILTER BAG (DRY PICKUP ONLY)	47351	47351
SLUDGE TRAP (WET PICKUP)	49844	49844
BATTERY:		
WET	26408	26512
DRY	26441	26551
CHARGERS:		
120V 60HZ	31360	31360
100V 50HZ	31361	31361
230V 50HZ	31362	31362
230V 60HZ	31364	31364
DUMP HOSE KIT	38369	38369
DUMP HOSE INSTALLED	38828	38828
BUMPER ROLLER KIT	38641	38640
KEYLOCK SWITCH	25295	25295
FOAM FILLED TIRE	38660	38660
PUMP-OVER ASSEMBLY	33808	33808
NEOPRENE SQUEEGEE BLADE	39063	39064
SQUEEGEE BLADE SET	39085	39086

## INTRODUCTION

Your automatic has been especially engineered and manufactured to give the maximum in performance during scrubbing and polishing of large floor areas.

With careful maintenance according to the instructions outlined in the following pages, a high standard of operation throughout its use will be insured.

Carefully inspect all components to insure that there is no concealed freight damage. If such damage is discovered, file a "CONCEALED DAMAGE REPORT" immediately with the delivering carrier.

The contents of this manual are based on the latest product information available at the time of publication. The right is reserved to make changes at any time without notice, in materials, equipment, price, color, specifications and models.

**IMPORTANT SAFEGUARDS: ACCIDENTS DUE TO MISUSE CAN ONLY BE PREVENTED BY THOSE USING THE MACHINE. TO GUARD AGAINST INJURY, BASIC SAFETY PRECAUTIONS AS SHOWN IN THIS MANUAL SHOULD BE OBSERVED.**

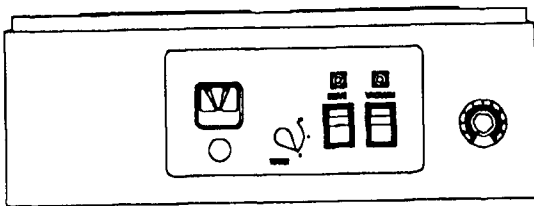


**CAUTION:**

**READ AND FOLLOW ALL SAFETY INSTRUCTIONS.**

## CONTROL PANEL

1. Battery meter. The needle must be within the GREEN area for efficient operation.
2. Water flow control knob.
3. Main drive "ON/OFF" switch with red indicator light.
4. "ON/OFF" switch for VACUUM motor. Red light indicates a full recovery tank.
5. Variable speed control knob may be used to vary the speed of the machine from 0-250 feet per minute.

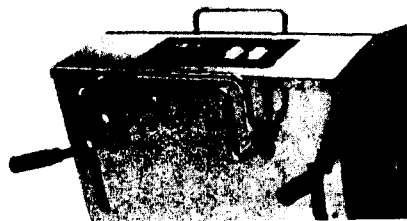


## MOTOR PROTECTION

There are three circuit breakers located on the rear panel of the machine directly beneath the traction control handles. These circuit breakers protect the motors in your machine by shutting them off in the event that they become overheated during operation. There is one circuit breaker to protect the brush drive motors, one to protect the traction drive motor, and one to protect the vacuum motor. If any of these motors will not turn on during operation, check to see if one of the circuit breaker buttons has popped out. If so, once the motor has been allowed to cool for a moment, push the button in and resume operation.

## TRACTION DRIVE OPERATION

To move the machine in forward or reverse, first push the drive switch to "ON". The forward motion of the machine is controlled by squeezing the control bar until the traction motor is engaged. Once engaged, the speed of the machine may be increased or decreased by turning the speed control knob on the far right of the instrument panel. To increase the speed of the machine, turn the knob clockwise. To reduce the speed, turn the knob counterclockwise. Reverse motion is controlled by pulling the control rod backwards until the motor is engaged in reverse. The machine is equipped with a differential drive for easy turning in either direction.



## SQUEEGEE OPERATION

On the rear panel, the right handle raises and lowers the squeegee. To raise the squeegee, pull the handle up and set it on the top of the ramp.

Push the squeegee handle down to lower the squeegee. This automatic is equipped with a squeegee which is capable of swinging nine

(9") inches to either side of the machine. This permits picking up of water on a turn because the squeegee will follow the pattern of the brushes. When up against a wall, the squeegee will ride tight to it until the machine pulls away. Should the squeegee encounter an obstruction, it will shift laterally until the obstruction has been passed.

## BRUSH CONTROL

To start and lower brushes:

1. Push drive switch "ON."
2. The left handle is lowered for scrubbing operation.
3. For heavy scrubbing and stripping operations, push the handle all the way down and set it on the bottom of the ramp.

## INSTALLING THE BRUSHES



PLACE MAIN SWITCH IN OFF POSITION BEFORE APPROACHING BRUSH COVER.

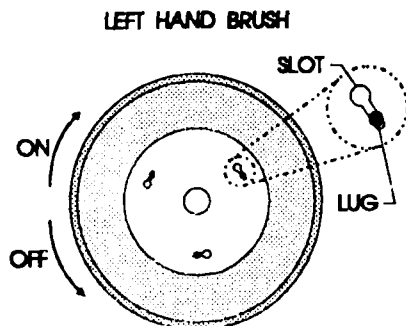
### CAUTION:

The automatics come equipped with two scrub brushes which mount to the brush drive as follows:

Each brush has three (3) lugs located around a hole.

To install brushes:

1. Raise the brush mechanism to full up position.
2. Remove brush cover by loosening two black knobs at front of machine.
3. There are two aluminum pins chained to the two traction motors. Insert each pin through the holes provided in the brush head plate.



4. Under each brush drive pulley is a slotted brush drive plate. Place the three (3) lugs on brush into the slotted brush drive plate.

5. Raise and rotate each brush with a sharp jerk toward the side of the machine. This will lock the brush lugs into the drive plate.

6. Remove the aluminum pins, turn them over and store in holes in brush plate. **Failure to remove pins will result in circuit breaker tripping or damage to the brush head.**

## SOLUTION TANKS

Raise the lid at the front of the machine. The fresh solution and the recovery tanks are mounted side by side. The right-hand tank is the fresh solution tank and is marked "FILL HERE." The left is the recovery tank, it has the vacuum motor mounted to it.

**DO NOT USE HOT WATER (OVER 125 DEGREES F) IN EITHER TANK.**

## VACUUM MOTOR AND LINT FILTER



### CAUTION

**ALWAYS MAKE SURE MAIN SWITCH AND VAC MOTOR SWITCH ARE OFF BEFORE MAKING ANY INSPECTION.**

The vacuum motor and lint filter are located in the vac well of the recovery tank. To inspect:

1. Turn off all switches.
2. Disconnect the vacuum motor plug.
3. Remove the two (2) vacuum motor tie down screws.
4. Lift the vacuum motor and filter off the two (2) studs.
5. Remove the motor filter and clean the foam material and any lint on motor fan or louvers.

## MICROSTAT FILTER

(Optional) Package of 12 (Part 38303)

Installation:



1. Remove the vacuum motor as in steps 1 thru 4 in instructions under Vacuum Motor.

2. Place the Microstat Filter into the vacuum motor pot. Be sure to cover the entire gasket that is on the bottom of the pot. Replace and secure the vacuum motor.

## SCRUBBING OPERATIONS

To apply solution to the floor, scrub and immediately recover the liquid and soil. The following sequence of operations is followed:

1. Press the main drive switch to the "ON" position.

2. Turn the vacuum switch "ON."

3. Lower the squeegee.

4. Turn water knob to desired flow rate.

5. Lower the brushes to the desired position; brush drive motors automatically turn "ON."

6. Squeeze the control rod for forward motion. Various speeds of forward or reverse motion can be obtained by changes in force on the central rod. An infinite number of speeds are available. **DO NOT REVERSE MACHINE WITH SQUEEGEE DOWN.**

## TURNS IN THE NORMAL SCRUBBING PATTERN

In order to reduce an over abundance of solution during operation on sharp turns:

(A) Turn water knob to "OFF" six (6) feet before the turn.

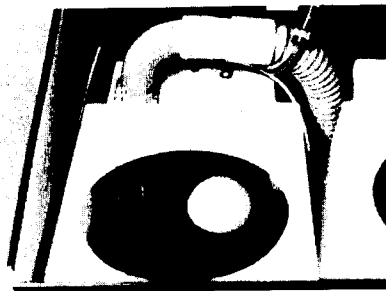
(B) Return the water knob to "ON" in the middle of the turn.

Our automatics can be easily controlled and maneuvered with one hand leaving the other hand free to manipulate the water flow.

## WET FLOAT SHUT-OFF AND INDICATOR LIGHT

The wet float shut-off is located in the recovery tank. To inspect and clean, remove the vacuum motor pot from the recovery tank. **NEVER RESTRICT THE WET FLOAT SHUT-OFF OR VACUUM MOTOR; FLOODING AND DAMAGE MAY OCCUR.**

When the recovery tank is full, the float shut-off will turn on the red vacuum light. When the red vacuum light comes on:



1. Turn the vacuum "OFF."

2. Take the machine to a dumping area and empty the recovery tank.

3. Flush out the tank with clean water and check to see that the wet float is not restricted.

## TO DUMP SOLUTION

Go to the right side of the machine, reach DOWN TO THE RIGHT DUMP VALVE (red handle) and pull up.

**NOTE: Stand well away from the valve for the soil will dump very fast.**

The left dump valve is for releasing the clean solution. (Directions are from operators position.)

## DUMP HOSE KIT

For conditions where a drain is not accessible, a dump hose kit (Part 38369) is available.

## MACHINE CARE

**Please read and follow the daily, weekly, and monthly maintenance schedule located on THE UNDERSIDE OF THE LID OVER THE BATTERY COMPARTMENT.**

At the end of the day's operation, the machine should be completely cleaned and prepared for the next shift's operations. Careful maintenance will insure effective performance throughout a long period of service.

1. Open the access to the recovery tank and completely rinse with clean water. If this is done at the end of each day, there will be no soil build-up to the surface of the polyethylene tank.

2. Clean the fresh water tank using the same procedure as in No. 1 above.

3. Do not store the machine with the brushes in down position because of the possible set in the brushes and possible discoloration of the floor due to moisture in the brushes.

4. Tilt the battery compartment lid full forward and inspect the battery compartment to insure

that no large amount of water or solution has gathered in the battery compartment tray.

5. Remove the brushes from the machine; clean and dry them as necessary and wipe down exterior of the machine.

## MAINTENANCE INSTRUCTIONS

A sound Preventative Maintenance Program will insure long, reliable and effective performance from your machine. We would strongly suggest that responsibility for the machine be assigned to a reliable individual in your organization. For recording maintenance refer to the Preventative Maintenance Checklist part number 083281.

## ADJUSTMENTS

### DIFFERENTIAL CHAIN ADJUSTMENTS

1. Locate access hole on lower chassis assembly on left side of machine.
2. Loosen bolt in access hole with 1/2" socket.
3. Slide idler sprocket down until chain is snug.
4. Retighten idler sprocket bolt.

### DRIVE MOTOR CHAIN ADJUSTMENTS

The drive motor chain on this automatic scrubber may be adjusted by turning the adjustment screw at the lower left-hand side of the rear of the machine (Item 2 on Lower Chassis Figure). The chain should not be sloppy, but avoid excessive tightening which can damage bearings. To tighten the chain, first loosen the four (4) motor mounting bolts, next turn the adjustment screw clockwise. To loosen, turn counterclockwise. Retighten motor mounting bolts.

### SQUEEGEE PRESSURE ADJUSTMENT

Squeegee pressure adjustment is required if squeegee wheels will not stay on the floor when squeegee is down. At the rear of the machine, mounted directly above the traction drive motor is a nut that adjusts the squeegee pressure.

To increase squeegee pressure:

1. Use a 1/2" deep socket wrench.
2. Turn the nut clockwise to increase squeegee pressure.

**NOTE:** Increasing squeegee pressure will increase effort required to lift squeegee.

### SQUEEGEE LIFT ADJUSTMENT

This adjustment is necessary when the squeegee will not clear the floor when the squeegee is in the "UP" position.

To adjust the squeegee higher, adjust the jam nuts on each side of the bracket at the bottom end of the squeegee cable:

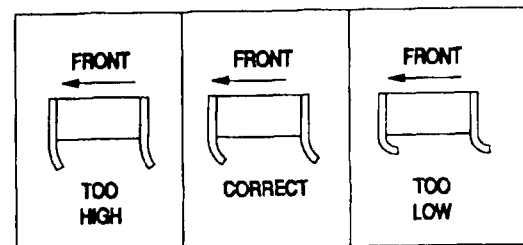
1. Put the squeegee handle in the "UP" position.
2. Loosen the bottom jam nut.
3. Turn the top jam nut clockwise until the squeegee is clear of the floor.
4. Tighten the bottom jam nut to lock the squeegee position.

### SQUEEGEE TILT ADJUSTMENT

The squeegee on this machine pivots freely, allowing the pressure on each end of the squeegee to keep it level with the floor at all times. The right to left tilt adjustment is automatic. Front to rear tilt adjustment is correct if, as the machine is moved forward, there is an equal amount of squeegee flare at the ends of the squeegee rubber as there is at the center. The front to rear tilt is controlled by adjusting the four (4) set screws on the squeegee mounting plate. If the squeegee flare is greater at the ends than at the center, loosen the two (2) black knobs, tighten the back two (2) set screws on the squeegee mounting plate equally and retighten the black knobs. If the squeegee flare is less at the ends than at the center, loosen the black knobs, tighten the front two (2) set screws on the squeegee mounting plate, and retighten the black knobs.

### SQUEEGEE HEIGHT ADJUSTMENT

In order for the squeegee to pick up effectively, the height must be adjusted to give the correct amount of squeegee rubber contact with the floor. As the machine is moved forward the back squeegee rubber should flare back so that the corner of the leading edge is straight down as shown in the figure labeled "CORRECT" below.



If the squeegee is too high or too low it will not pick up properly.

To adjust the squeegee height:

1. Lower the squeegee to the floor.
2. Loosen the jam nut on the squeegee height adjustment screw (located on top of the squeegee bar, directly above the squeegee wheels).
3. To raise squeegee turn screw clockwise, to lower turn counterclockwise.
4. Retighten jam nut.

## USE OF THE BATTERY CHARGER

The Kent Battery Charger is electronically controlled and will drop and hold a finish rate of 2 to 3 amps at which time the charger will stay on for another 2 hours before stopping. The charger is equipped with a standard 15 amp fuse for protection from short circuit or reverse polarity of the batteries.

To operate the battery charger:

1. Open the battery compartment lid. Do not close this lid during charging operation.



### CAUTION:

Hydrogen gas is formed when the batteries approach the full charge state. This gas is explosive; therefore, when charging batteries with lid open, avoid any open flame or electric spark near batteries.

This includes connecting or disconnecting charger with timer "ON." To avoid accumulation of gas, be sure batteries receive good air circulation while being charged.

2. Connect the charger plug into the machine firmly. The charger plug is mounted in the battery compartment and beneath the control panel.

3. Plug the battery charger into a normal electrical outlet.

**NOTE:** Set the battery charger on a flat, hard surface to insure that cooling air can circulate through the bottom louvers.

The battery charger is guaranteed against defective parts and workmanship. Any parts proving defective within six months will be repaired free of charge when the charger is returned prepaid to the manufacturer.

## BATTERY CARE

Battery care determines the life span and efficiency of the units; therefore, for the longest

possible useful life from these batteries, the following procedure should be followed:

1. Keep battery solution (electrolyte) level up in cells. Check daily - if cells need water, use only distilled or approved water.
2. Keep batteries fully charged.
3. Keep batteries and connection clean. When necessary, clean with baking soda solution, attach wires and coat terminals with grease to retard corrosion.

## SERVICE & BATTERY GUARANTEE APPLYING TO SCRUBBER-VAC BATTERIES

**SERVICE GUARANTEE:** If a battery becomes unserviceable in normal use within 90 days of purchase, the purchaser is entitled to a new battery of a comparable size and type, without charge, or to the necessary repairs, without charge for either labor or materials, at the option of the manufacturer. Transportation, recharges, or the use of rental batteries are not classed as repairs and the battery owner is expected to pay for such services, if required.

**ADJUSTMENT POLICY:** If a battery becomes unserviceable in normal use after the expiration of the service guarantee, it will be repaired or replaced with another battery of a comparable size and type to the original purchaser, on a pro-rated price basis, in exchange for the unserviceable battery, the purchaser paying only for the service received, plus transportation charges.

**LIMITATIONS:** Failure in service due to fire, wreckage, explosion, freezing, abuse or neglect, use of battery "dopes," or the use of a battery of a group size smaller than of the battery used as original equipment is not covered by the Service & Battery Guarantee. The Service & Battery Guarantee will not apply if battery has been opened or repaired or manufacturer's identification markings has been obliterated before presentation for adjustment or if battery has broken case or cover or if battery is discharged.

## SCALE FOR PRO-RATING AFTER 90 DAYS

Months Operation    Price    Exchange  
Months Guarantee x 1 = Price

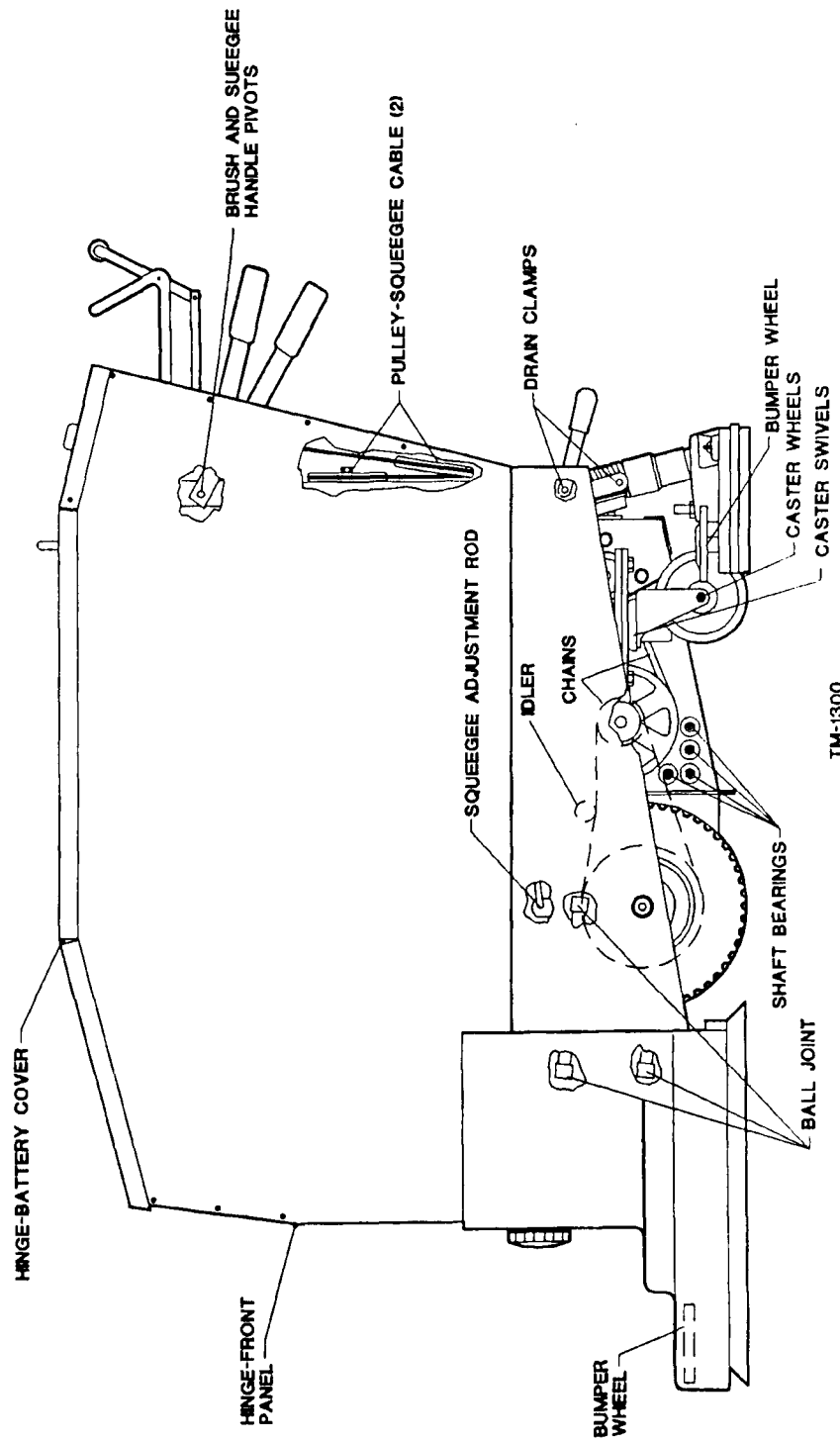
All batteries are guaranteed for twelve (12) months from date of receipt.

(Subject to change without notice)

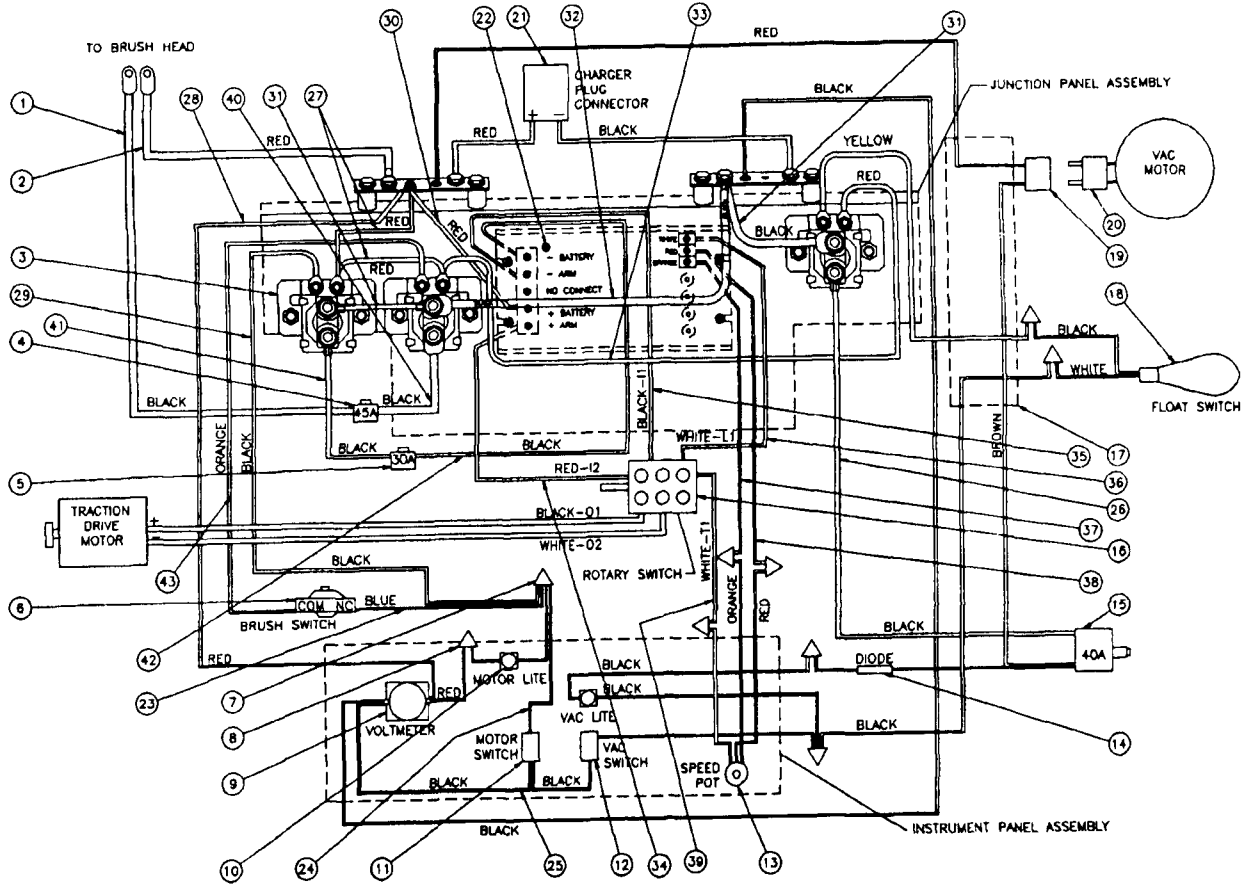
# SERVICE DIAGNOSIS - TROUBLESHOOTING CHECKLIST

PROBLEM	CORRECTION
<b>MACHINE WILL NOT MOVE</b>	
1. Power Switch not on.....	Turn main switch "ON".
2. Battery condition low.....	Check voltmeter and charge batteries.
3. Speed set too low.....	Adjust speed control knob
<b>BRUSH DRIVE MOTOR WILL NOT START</b>	
1. Battery condition low.....	Check voltmeter and charge batteries.
2. Circuit breaker tripped.....	Reset by pushing circuit breaker button.
3. Pins left in brush plate tripping circuit breaker.....	Remove pins and store in holes in frame.
<b>MACHINE STREAKING A CLEANED FLOOR</b>	
1. Foreign materials lodged under rear squeegee blade.....	Raise squeegee and clean squeegee blade.
2. Insufficient water flow to brushes.....	Clean screen and fresh solution tank and eliminate any restrictions in lines.
3. Worn squeegee blades.....	Replace squeegee blade
4. Worn brushes or pads.....	Replace brushes or pads.
5. Improper squeegee adjustment.....	See Squeegee Adjustments.
<b>VACUUM SUCTION BLOCKED</b>	
1. Clogged pick-up tube.....	Remove accumulations.
2. Lint Filter dirty.....	Clean lint filter.
3. Clogging at elbows and hose entering recovery tank.....	Remove elbow and clean.
<b>SHORT OPERATING TIME</b>	
1. Battery charge condition very low.....	Recharge batteries fully before beginning operation.
2. Constant scrub operation in high pressure (strip) position.....	Use high pressure more sparingly.
3. Corroded wires or connectors.....	Clean thoroughly.
<b>CIRCUIT BREAKER KEEPS TRIPPING</b>	
1. Pins left in brush plate.....	Remove pins and store in holes in frame.
2. Pads or brushes rubbing.....	Install original equipment accessories.
<b>WATER WILL NOT COME ON</b>	
1. Water line disconnected.....	Reconnect water solution line to brush head.
2. Cable is loose on water valve.....	Tighten cable to valve.
<b>SQUEEGEE LEVER DOES NOT PICK UP</b>	
1. Squeegee height requires adjustment.....	See adjustment instructions in catalog.
<b>CHARGER WILL NOT COME ON</b>	
1. DC or AC cords not connected.....	Connect.
2. Fuse defective.....	Replace fuse with standard 15 Amp fuse.
3. Polarity reversed.....	Change polarity so voltmeter on instrument panel reads correctly.

LUBRICATION CHART  
 KA-266EB - KA-326EB



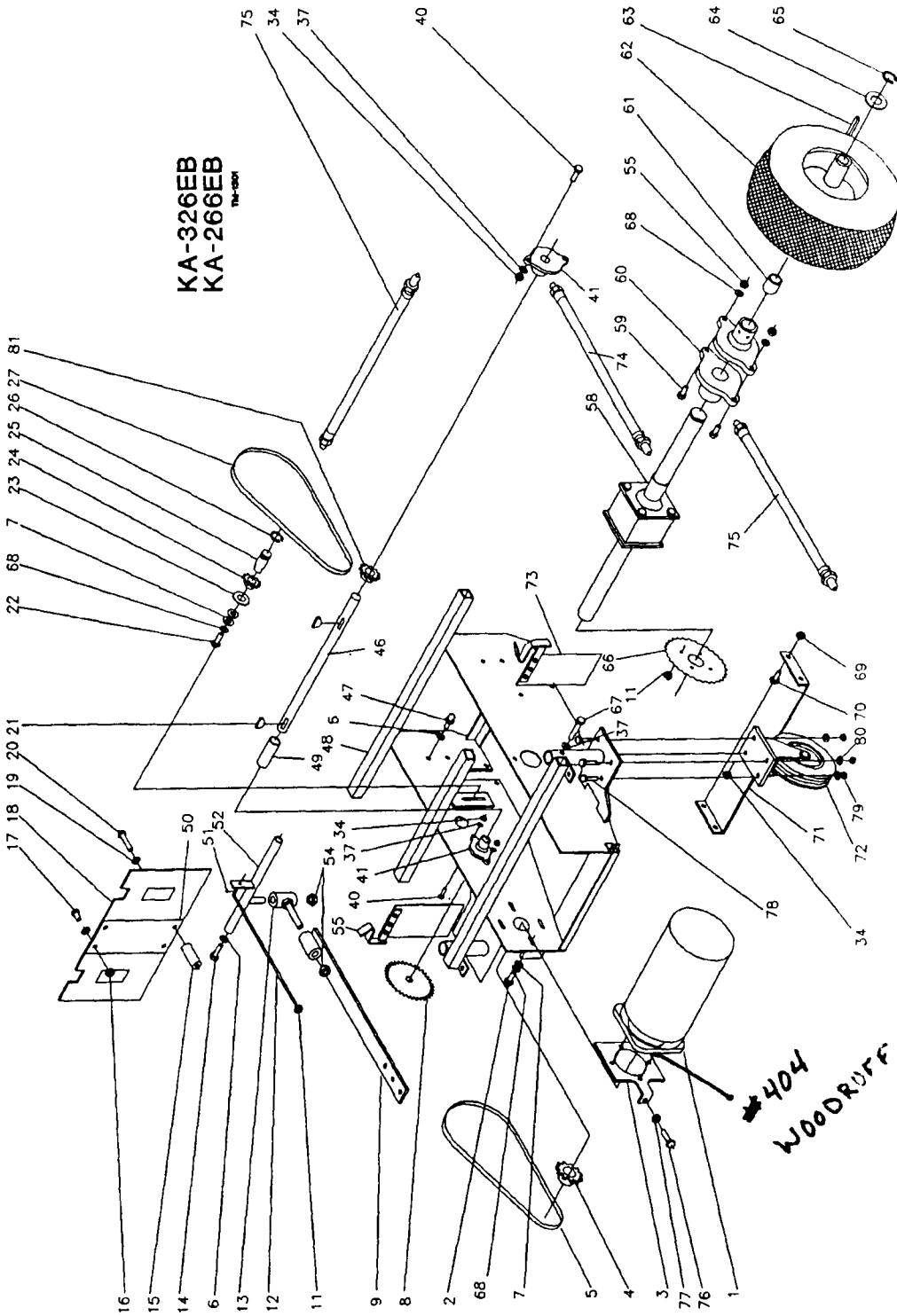
# WIRING DIAGRAM



TM-1282

DET PART NO.	DESCRIPTION	QUANT	
1	025340	ASM,WIRE— 6GA,BLK,78.0L,RINGS	1
2	025341	ASM,WIRE— 6GA,RED,78.0L,RINGS	1
3	026504	SOLENOID—SWITCH,SPNO,36VDC	3
4	026924	CIRCUIT BREAKER—45 AMP	1
5	026651	CIRCUIT BREAKER—30 AMP,THRM	1
6	026515	SWITCH,PUSH—SPDT,21A,240V	1
7	026400	NUT,WIRE—IDEAL 74B	2
8	026464	NUT,WIRE—IDEAL 73B	7
9	026503	VOLTMETER	1
10	026507	LIGHT,INDICATOR—RED,36VDC	2
11	026469	SWITCH,RKR—SPST,10A,250V,3/4H	1
12	026466	SWITCH,RKR—SPST,10A,250V,3/4H	1
13	025954	POTENTIOMETER	1
14	027056	DIODE—IN4006,SVC FOR 026984	1
15	026750	CIRCUIT BREAKER—40 AMP,THRM	1
16	027057	SWITCH,CAM 40 AMP MOTOR REV	1
17	026984	ASM,WIRE—4 CNDCT	1
18	026725	SWITCH,TILT—MERCURY,15A,115V	1
19	026661	CONN,RCPT—2-WR,LINE CONN,FEM	1
20	026555	CONN,PLUG—2-WR,LINE CONN,MALE	1
21	026573	CHARGER PLUG	1
22	025953	CONTROL—VOLTAGE DC	1

DET PART NO.	DESCRIPTION	QUANT	
23	027093	ASM,WIRE—16GA,BLU,20.0L,RING	1
24	025570	ASM,WIRE—16GA,BLK,7.0L,QD	1
25	025244	ASM,WIRE—2 CNDCT,16GA,BLK	1
26	025765	ASM,WIRE—14GA,BLK,12.00L,COMB	1
27	025246	ASM,WIRE—16GA,RED, 8.0L,RINGS	2
28	025258	ASM,WIRE—2 CNDCT,16GA,RED	1
29	027084	ASM,WIRE—16GA,BLK,24.00L,RING	1
30	027072	ASM,WIRE—12GA,RED,8.00L,RING	1
31	027061	ASM,WIRE—12GA,BLK,7.00L,RING	2
32	025274	ASM,WIRE— 6GA,BLK,14.0L,RINGS	1
33	027075	ASM,WIRE—16GA,RED,16.00L,RING	1
34	027070	ASM,WIRE—12GA,RED,24.00L,RING	1
35	027068	ASM,WIRE—BLK,24.00L,RINGS	1
36	027074	ASM,WIRE—16GA,WHI,16.00L,RING	1
37	025827	WIRE—RS 98042,12.00L, .38&.38	1
38	027073	WIRE—RS 098035,12.00L, .38, .38	1
39	027096	ASM,WIRE—16 GA WHT12.00L,RING	1
40	025303	ASM,WIRE— 6GA,BLK,10.0L,RINGS	1
41	027060	ASM,WIRE—12GA,12.00L,RINS	1
42	027066	ASM,WIRE—GA,BLK,12.00L,RING	1
43	027062	ASM,WIRE—16GA,ORN,12.00L,RING	1



• ENTIRE ASSEMBLY IS PART NO. 039405

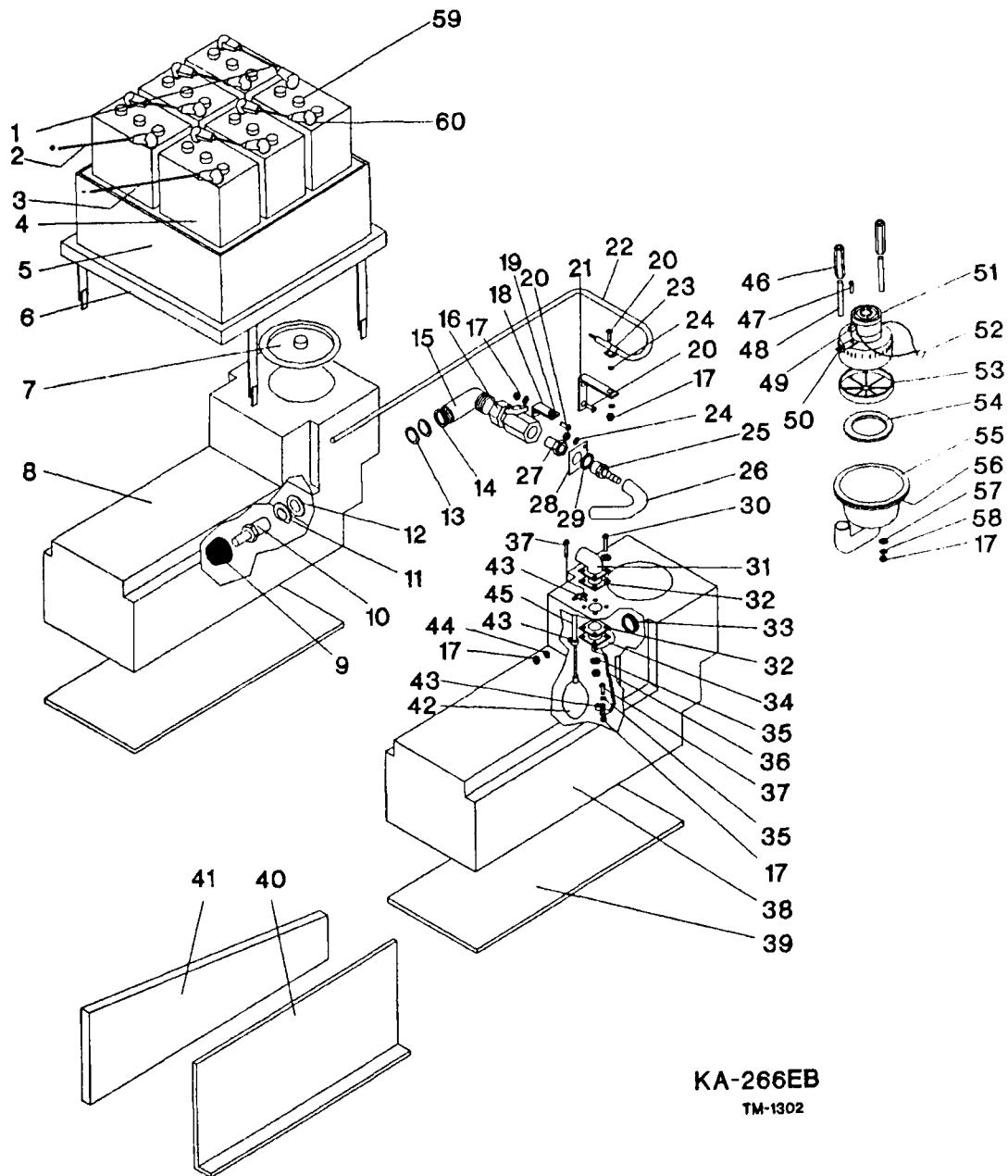
# KA-266EB KA-326EB LOWER CHASSIS

DET PART NO.	DESCRIPTION	QUANT
1	MTR, DC—36V., 750HP, 700RPM, 48F	1
1	BRUSH, MTR—FOR 23307 & 23308	4
1	ASM, RING—BRUSH	1
1	BRG, BALL—787ID, 1.850OD, .551W	2
2	SCR CAP HEX HD .312-18X1.00L	4
3	BRACKET, STL—6.0X5.0, TENSIONER	1
4	SPROCKET, CHAIN—#35., 375P, 11T	1
5	CHAIN ROLLER—#35., 32.5LK&CONN	1
6	WSHR LK .390ID, 683OD, .094TSPLT	6
7	WSHR FLT .344ID, 750OD, .060T STL	6
8	SPROCKET, CHAIN—#35., 375P, 36T	1
9	ASM, SQUEEGEE BAR—W/WHEELS	1
9	WDMT, SQUEEGEE BAR—PIVOT TUBE	1
11	NUT, HEX LOCK—312-18, ZN PLT	1
12	ROD, SQUEEGEE—312 DIA X 13.3L	1
13	WDMT, PIVOT—SQUEEGEE	1
14	SCR CAP HEX HD .375-16X.875L	2
15	SPACER, PHEN—250X.500, .375L	2
16	NUT, HEX LOCK—10-24, NYLOC	2
17	SCR MACH RD HD 10-24X.500L	2
18	RUBBER, SPLSH GUARD—8.18X14.75	1
19	WSHR FLT .187ID1.000D, .063T STL	4
20	SCR TPG F PAN HD 10-24X.875L	2
21	KEY, WOODRUFF—#606, .750D, .187W	2
22	ASM, GREASE FITTING 'AUTOS'	1
23	WSHR FLT .344ID1.000D, .036T STL	1
24	SPROCKET, CHAIN—#40., 500P, 11T	1
25	IDLER SHAFT—MOTOR, 1.339 LONG	1
26	RING, RTNG—EXT., 625 SHAFT, .5100	1
27	CHAIN, ROLLER—#40., 68LK & CONN	1
28	LINK, CONN—#40 ROLLER CHAIN	1
34	NUT, HEX—250-20, ZN PLT	6
37	WSHR LK .262ID, 489OD, .062TSPLT	6
40	SCR CAP HEX HD 250-20X1.00L	4
41	BRG, W/PB—625ID, MALLEABLE IRN	2

DET PART NO.	DESCRIPTION	QUANT
46	SHAFT—AUTO SCRUBBER	1
47	BALL JOINT	4
48	WDMT, CHASSIS—LOWER	1
49	TUBE, STL—750OD, 17GA, 1.825L	1
50	PLATE, MTG—SPLASH GUARD 4.0X7	1
51	PIN, COTTER—.094X.750 LONG	1
52	WDMT, SQUEEGEE—ADJUSTMENT	1
54	NUT, HEX LOCK—500-13, ZN PLT	2
55	ASM, GUARD—SPLASH, LEFT	1
58	DIFFERENTIAL, DRIVE—26&32 AUTO	1
59	SCR CAP HEX HD .312-18X1.75L	4
60	BRG, BALL, ANLR, SLD—SELF ALGN.	4
61	SPACER, STL—1.01X1.25, .563L	2
62	WHEEL—RS 51395 FOAM FILLED	2
63	KEY, SQUARE—250 SQ, 2.500 LONG	2
64	WSHR FLT 1.05ID1.500D, .036T STL	4
65	RING, RTNG—EXT., 984 SHAFT, .5160	2
66	SPROCKET, CHAIN—#40., 500P, 44T	1
67	SCR CAP HEX HD .250-20X1.75L	2
68	WSHR LK .326ID, 586OD, .078TSPLT	11
69	NUT, HEX LOCK—375-16, NYLOC	4
70	SCR CAP HEX HD .375-16X.750L	4
71	SUPPORT, PLATE—LOWER 26&32 AUTO	2
72	CASTER, SWIVEL—5.0 DIA, MACH'D	2
73	ASM, GUARD—SPLASH, RIGHT	1
74	ASM, HOSE—GREASE, 8.50L HOSE	2
75	ASM, HOSE—GREASE, 10.25L HOSE	5
76	SCR CAP HEX HD .312-18X1.25L	1
77	NUT, HEX JAM—312-18, ZN PLT	1
78	SCR CAP HEX HD .375-16X1.00L	8
79	NUT, HEX—375-16, ZN PLT	8
80	WSHR LK .398ID, 694OD, .040T EXT	8
81	SPROCKET, CHAIN—#40., 500P, 11T	1

ADD:

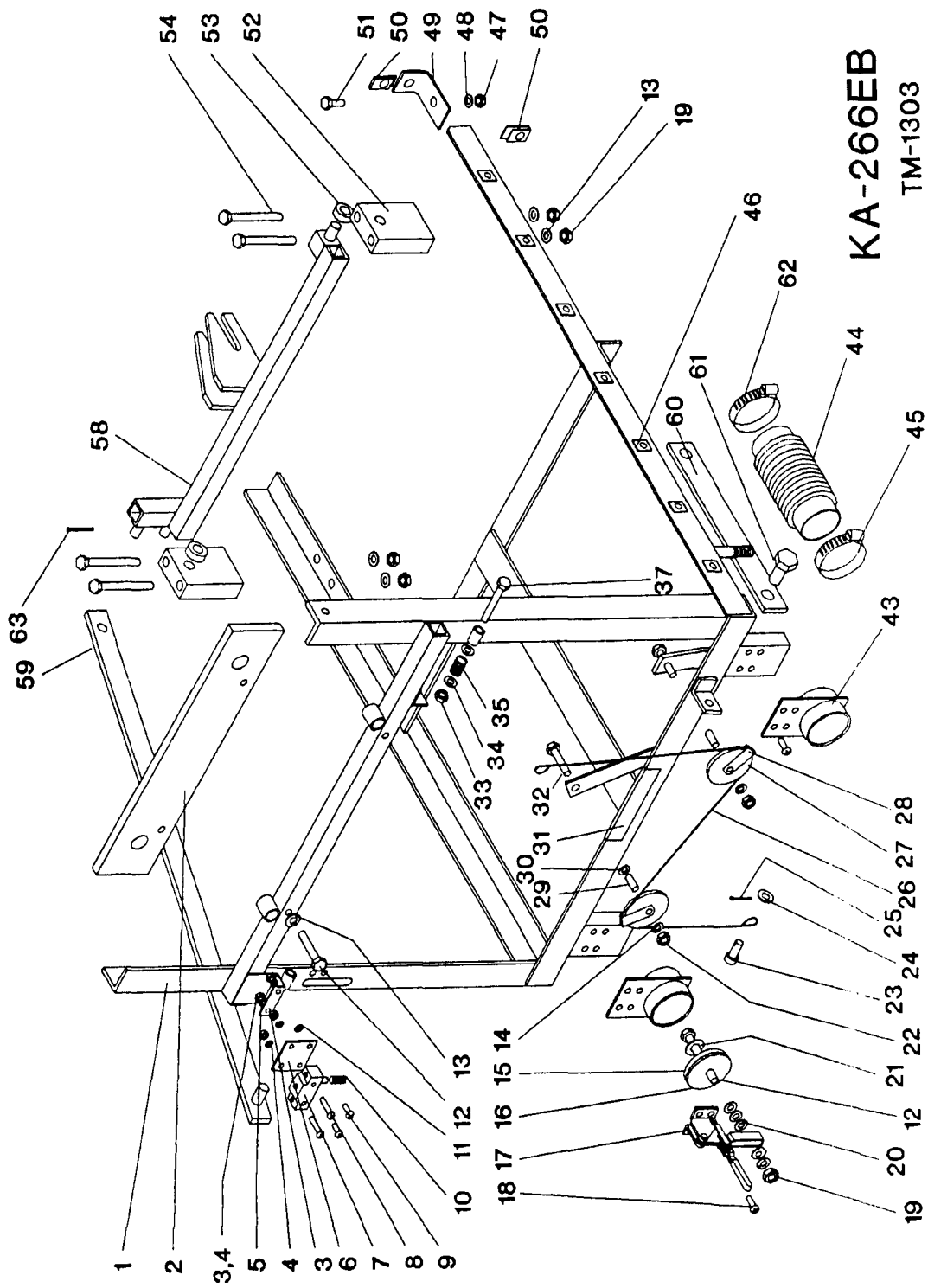
72) 055658 Caster - SMOOTH  
 72) 039563 WHEEL & AXLE  
 5) 048336 1/2 LINK #35  
 27) 044781 Master Link #40 chasis



KA-266EB  
 TM-1302

# KA-266EB TANK ASSEMBLIES

DET	PART NO.	DESCRIPTION	QUANT	DET	PART NO.	DESCRIPTION	QUANT
1	025274	ASM,WIRE— 6GA,BLK,14.0L,RINGS	1	30	002210	SCR MACH RD HD 10-24X1.50L	4
2	025275	ASM,WIRE— 6GA,RED, 8.0L,RINGS	1	31	032542	ASM,ELBOW—INLET-TOP	1
3	025085	ASM,WIRE— 6GA,BLK,10.2L,RINGS	5	32	048257	GASKET-INLET ELBOW	2
4	026408	BATTERY— 6V,200AH,WET	6	33	046831	GROM—1.31 ID,1.50 MHD,.062 PA	1
4	026441	BATTERY— 6V,200AH,DRY	6	34	032543	ELBOW ASM-INLET-BOTTOM	1
5	053536	BOX,BATT—26" AUTO'S,MACHINED	1	35	005297	WSHR LK .200ID.334OD.047TSPLT	5
6	032686	BATTERY SUPPORT FRAME	1	36	033521	ASM,CHAIN— BALL LINK 7.37L.	1
7	051107	LID-SOLUTION TANK	1	37	001327	SCR MACH PAN HD 10-24X.750L	3
8	051073	SOLUTION TANK-MACHINED	1	38	051469	VAC TANK'MACHINED'—26 AUTO	1
9	048848	LINE STRAINER	1	40	048818	GUARD-BRUSH LIFT LEVER	1
8	055765	Palle water					
10	048776	ADPTR,PP-BS—3/4 MPTX.500 BOSS	1	41	048817	SUPPORT-TANK	1
11	004472	WSHR FLT 1.08ID2.06OD W/FLAT	1	42	026947	SWITCH,TILT—MERCURY	1
12	046980	ASM,GASKET— <del>COPPER</del> Neoprene	2	43	051466	CLAMP,LOOP— .297 CLOSED I.D.	3
13	004330	WSHR FLT 1.05ID1.50OD.036T STL	2	44	224074	WSHR SEAL .203ID SS	4
14	006114	NUT,HEX LOCK— .750 IPT,CONDUIT	1	45	051692	PIPE,PVC— .50 IDX.62 ODX6.87 L	1
15	051603	ELBOW,PIPE—3/4 MPTX3/4IPT,BRS	1	46	048843	BAR,ALUM,HEX— .500, 3.00 LONG	2
16	048654	VALVE-WATER V-75	1	47	002380	SCR TPG F PAN HD 10-B X.625L	2
17	003279	NUT,HEX— 10-24,ZN PLT	11	48	054645	STUD—MOTOR MOUNT,5.62LG,3 STG	2
18	044811	LEVER-WATER VALVE	1	49	039428	BRUSH,MTR—FOR 024373 VAC MTR	2
19	044826	CONNECTOR-WATER VALVE CABLE	1	50	047348	LUG MOTOR MOUNT	2
20	001295	SCR MACH RD HD 10-24X.625L	4	51	E49321	HOUSING	1
21	048511	BRACKET	1	51	024373	MTR,VAC—36V,BYP,3STAGE	1
22	032548	ASM,CABLE—WATER	1	52	026555	CONN,PLUG—2-WR,LINE CONN,MALE	1
23	042113	CLAMP,LOOP— .187 DIA,STL	1	53	046817	LINT FILTER	1
24	004253	WSHR LK .204ID.410OD.025T EXT	8	54	049355	GASKET-VAC MOTOR	1
25	048688	ADPTR,PP-HS—1/2 MPTX1/2HS,BRS	1	55	054646	POT,VAC—3-STG,MACHINED	1
26	051610	TUBE,VINYL— .500X.750,12.00L	1	56	048563	GASKET-VAC POT	1
27	006019	BSHG,PIPE—3/4 MPTX1/2 IPT,BRS	1	57	048881	SPACER,RBR— .130X1.00, .187L	2
28	048510	PLATE	1	58	004226	WSHR FLT .234ID1.125OD.036TSTL	2
29	006108	NUT,SPECIAL— .500 PIPE,HEX LOC	1	59	053723	CAP,BATTERY—W/GASKET,F/26408	18
				60	054186	BOOT,INSULATOR—BATT TERMINALS	12



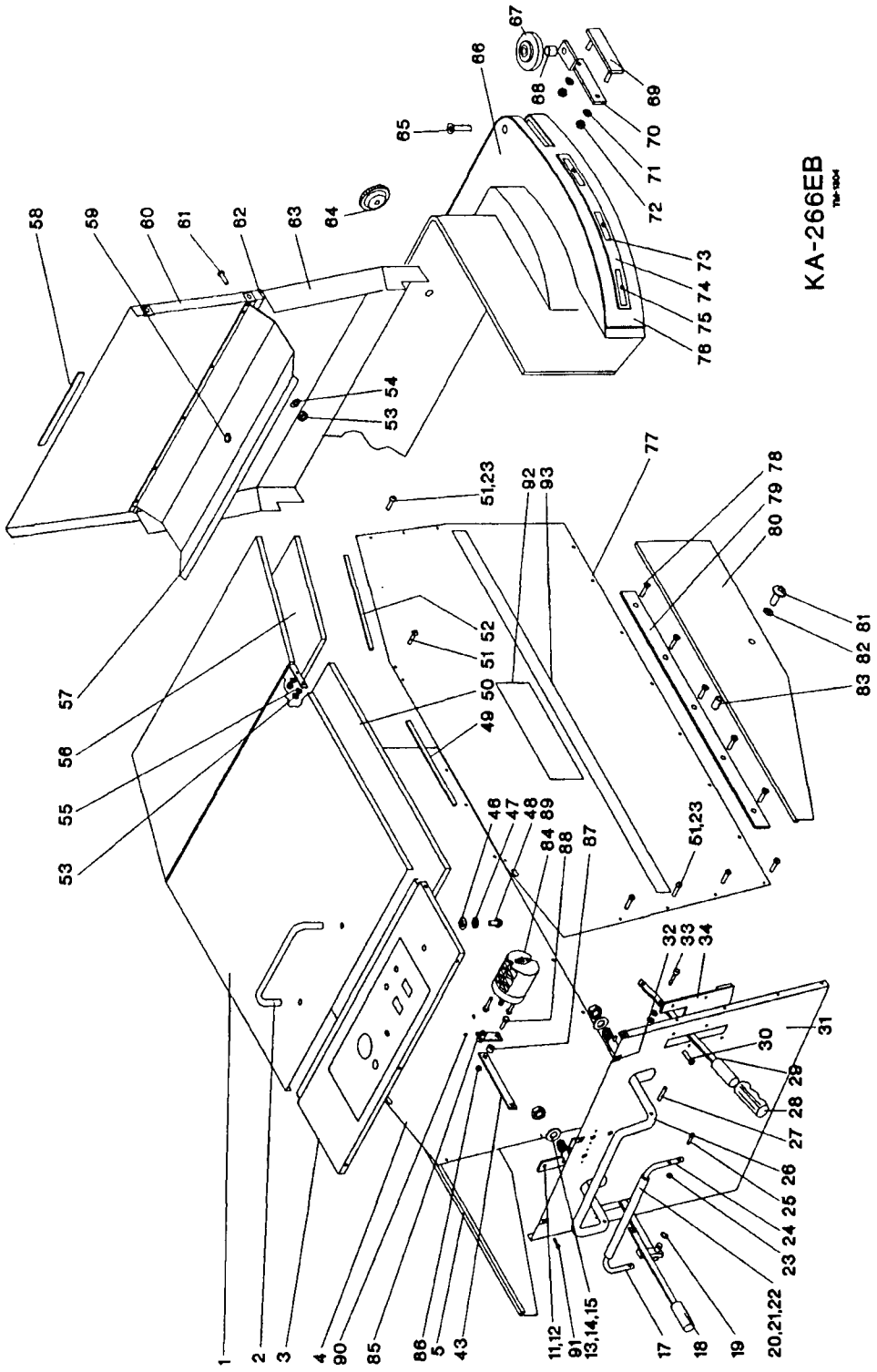
KA-266EB

TM-1303

# KA-266EB UPPERCHASSIS

DET PART NO.	DESCRIPTION	QUANT
31	WEAR STRIP-CABLE 98256	1
32	SCR CAP HEX HD .250-20X1.25L	3
33	NUT,HEX LOCK--375-16,ZN PLT	2
34	WSHR FLT .438ID1.000D.104T STL	4
35	SPRING,COMP .600D 1.00L .072WD	2
36	PULLEY,CABLE--1.62 OD,.375 ID	1
37	SCR CAP HEX HD .375-16X3.00L	2
38	WIRE ROPE--.125 DIA. X 32.75L	1
39	NUT,HEX LOCK-- 10-24,NYLOC	1
40	WSHR FLT .203ID.750OD.048T SS	2
41	SPACER,PHEN--250X.437 .250L	1
42	SCR MACH PAN HD 10-24X.750L	1
43	WDMT,BRACKET--DUMP VALVE	2
44	HOSE,RBR,FLEX--4.37-7.50L	2
45	CLAMP,HOSE--2.25 MAX DIA,WORM	2
46	NUT,SELF RETAINING--250-20	14
47	NUT,HEX--375-16,ZN PLT	2
48	WSHR LK .390ID.663OD.094T SPLT	2
49	ANGLE,STL--1.50X1.50X1.75LONG	2
50	NUT,SPEED,J--250-20,63X.96,Z	2
51	SCR CAP HEX HD .375-16X.875L	2
52	CASTING,MACH--RS97369,BLOCK	2
53	SPACER,STL--532X.750 .312L,Z	2
54	SCR CAP HEX HD .312-18X5.00L	4
56	ANGLE,STL--1.50X1.50X24.00L	1
58	WDMT,LIFT--BRUSH HEAD,26" AUTO	1
59	ASM,BAR--CONNECT,BRUSH LIFT	1
60	BAR-CASTER SUPPORT 26&32 AUTO	2
61	SCR CAP HEX HD .250-20X2.00L	2
62	CLAMP,HOSE--2.50 MAX DIA,WORM	2
63	PIN,COTTER--.094X .750 LONG	2

DET PART NO.	DESCRIPTION	QUANT
1	WDMT,CHASSIS--UPPER,26 AUTO	1
2	ASM,BATTERY--SUPPORT	1
3	NUT,HEX-- 6-32,ZN PLT	4
4	WSHR LK .148ID.250OD.031T SPLT	4
5	WSHR FLT .156ID.375OD.065T BRS	2
6	PLATE,MOUNTING--SWITCH	1
7	SWITCH,PUSH--SPDT,21A,240V	1
8	SCR MACH RD HD 6-32X1.25L	2
9	SCR MACH RD HD 6-32X.750L	2
10	SPRING,COMP .344D .687L .032WD	1
11	WSHR LK .150ID.320OD.022T EXT	2
12	SCR CAP HEX HD .312-18X1.75L	4
13	WSHR LK .326ID.586OD.078T SPLT	8
14	WSHR LK .262ID.489OD.062T SPLT	3
15	WSHR NEOPRENE .250X2.25X.187T	2
16	WSHR FLT .328ID2.27OD.120T STL	2
17	DRAIN CLAMP	2
18	SCR TPG F PAN HD .250-20X.500L	8
19	NUT,HEX--312-18,ZN PLT	6
20	WSHR FLT .344ID.687OD.060T STL	4
21	WSHR FLT .406ID1.750D.060T STL	2
22	NUT,HEX--250-20,ZN PLT	3
23	PIN,CLEVIS--375X .625 LONG	1
24	WSHR FLT .406ID.750OD.060T STL	1
25	PIN,COTTER--.125X .750 LONG	1
26	CABLE,STL--.125DIA,37.50L	1
27	PULLEY,CABLE--2.500D,.378 BORE	2
28	GUARD-PULLEY	3
29	SPACER,STL--.253X.374 .530L,Z	3
30	WSHR FLT .281ID.750OD.120T STL	1



**KA-266EB**  
THE 1904

# KA-266EB OUTER COVER ASSEMBLY

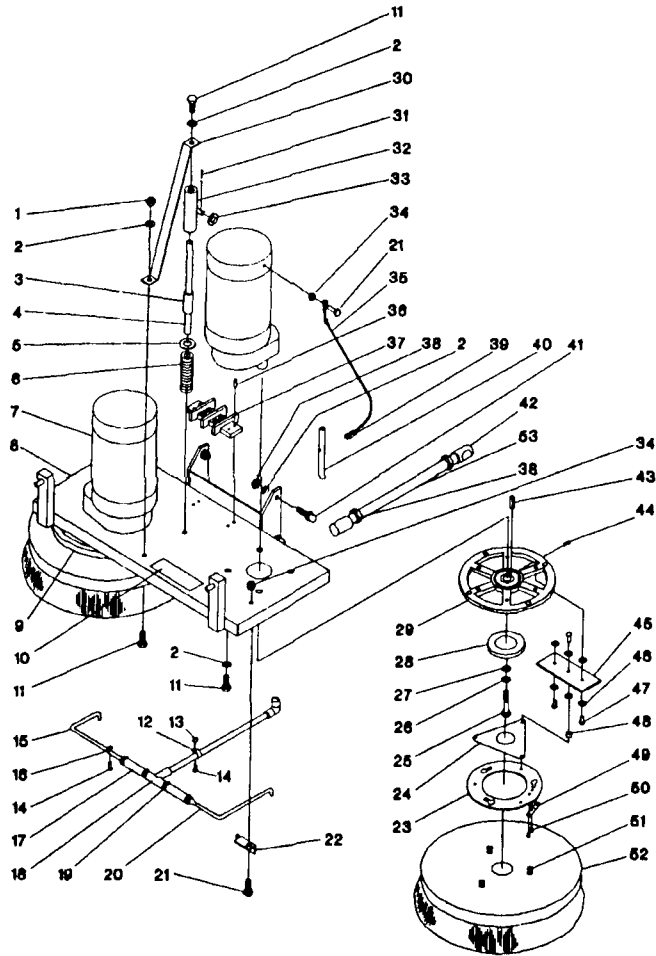
DET PART NO.	DESCRIPTION	QUANT
1	ASM, COVER—	1
2	HANDLE, STL	1
3	PANEL, INSTR—26, ELEC SPD CNTRL	1
4	PANEL OUTER COVER-LEFT	1
5	PANEL LOWER—LEFT, AUTO'S	1
11	PLATE, HANDLE LOCK	1
12	PLATE-HANDLE LOCK BOTTOM	1
13	NUT, HEX JAM—625-11, ZN PLT	2
14	WSHR FLT .625ID1.250D.120T STL	2
15	PIN, ROLL—, 187 DIA, 1.000L	2
16	SWITCH, PUSH—SPDT, 20A, 125-250V	2
17	BAR, HANDLE-LEFT, 26&32 AUTO	1
18	ASM, HANDLE—BRUSH, 26&32 AUTO	1
19	RING, RTNG—EXT, 500 SHAFT, "E"	1
20	ASM, SQUEEZE HANDLE—26&32 AUTO	1
21	HANDLE-TRACTION BAR	1
22	PIN, ROLL—, 187 DIA, .880L	15
23	NUT, HEX LOCK— 10-24, NYLOC	1
24	BAR, HANDLE-RIGHT, 26&32 AUTO	1
25	SCR MACH PAN HD 10-24X1.00L	1
26	WDMT, SQUEEZE BAR	1
27	PIN, ROLL—, 187 DIA, 1.375L	2
28	HANDLE-GRIP	2
29	ASM, HANDLE—SQUEEGEE	1
30	SCR MACH RD HD .250-20X.500L	8
31	PANEL, REAR—SS, 26IN AUTO	1
32	NUT, SPEED, J—, 250-20, .63X.96, Z	5
33	PIN, CLEVIS—, 375X1.000 LONG	1
34	ASM, LOCK—SQUEEGEE	1
43	BAR, STL—, 188X.50X8.125L	1
46	WSHR FLT .281ID.562OD.063T STL	2
47	WSHR LK .262ID.489OD.062TSPLT	2
48	SCR CAP HEX HD .250-20X.625L	2
49	WEAR STRIP-SIDE PANEL REAR	2
50	COVER-BATTERIES	1
51	SCR MACH PAN HD 10-24X.500L	16
52	WEAR STRIP-SIDE PANEL FRONT	2
53	NUT, HEX— 10-24, ZN PLT	9
54	WSHR LK .200ID.334OD.047TSPLT	5
55	WSHR LK .204ID.410OD.025T EXT	4

ADD:

DET PART NO.	DESCRIPTION	QUANT
56	SOUND RETAINER - VAC FAN	1
57	WDMT, COVER—MOTOR DRIP	1
58	WEAR STRIP-UPPER FRONT PANEL	1
59	GROM—, .437 ID, .562 MHD, .062 PA	1
60	FRONT PANEL-UPPER	1
61	SCR TPG F PAN HD 10-24X.375L	10
62	HINGE, BUTT—, 1.25X22.50 LONG	1
62	GASKET, FOAM—, .062X.500X22.50L	2
63	FRONT PANEL-LOWER	1
64	KNOB	2
65	SCR MACH FLAT HD .375-16X2.00L	1
66	ASM, COVER—BRUSH, 26" AUTO'S	1
66	COVER, BRUSH, POLY-MACHINED, 26"	1
67	WHEEL—, 3.00DIA, 380BORE, .875HB	1
69	WDMT, BAR, BUMPER WHEEL CLAMP	1
70	WDMT, BUMPER WHEEL MTG — AUTO'S	1
71	WSHR LK .262ID 489OD.062TSPLT	2
72	NUT, HEX—, 250-20, ZN PLT	2
73	STR, STL—, .062X.437X1.50 LONG	9
74	CHNL, PLSTC—, 750X.281X 40.12 L	1
74	CHNL, PLSTC—, 750X.281X 13.18 L	1
75	SCR TPG F PAN HD 8-10X.562L	9
76	GUARD, SPLASH—, 12X4.00X68.00L	1
77	PANEL-OUTER COVER-RIGHT	1
78	SCR MACH FLAT HD .250-20X.750L	8
79	BAR, SPACER—27 LONG	2
80	PANEL, LOWER—RIGHT, AUTO'S	1
81	SCR CAP BTN HD .500-13X1.50L	2
82	WSHR FLT .500ID1.500D.125T NYL	2
83	SPACER, STL—, 506X.750, .500L, Z	2
84	SWITCH, CAM 40 AMP MOTOR REV	1
85	BRACE, STL—CAM SWITCH ARM	1
86	NUT, HEX LOCK—, 250X.500, .500L	1
87	SPACER, PHEN—, 250X.500, .500L	1
88	SCR CAP HEX HD .250-20X1.50L	1
89	SCR MACH RD HD 10-32X.500L	2
90	SCR SET CUP FT .250-20X.250L	2
91	SCR MACH RD HD .250-20X.750L	5
92	LABEL, IDENT—KENT AUTO 5.25X20	2
93	TAPE, VINYL—BLACK, 47.0CUTLNGTH	2

- 1) 049025 Daily Decals
- 1) 049026 Battery Decal
- 1) 050415 Wiring Diagram Decal

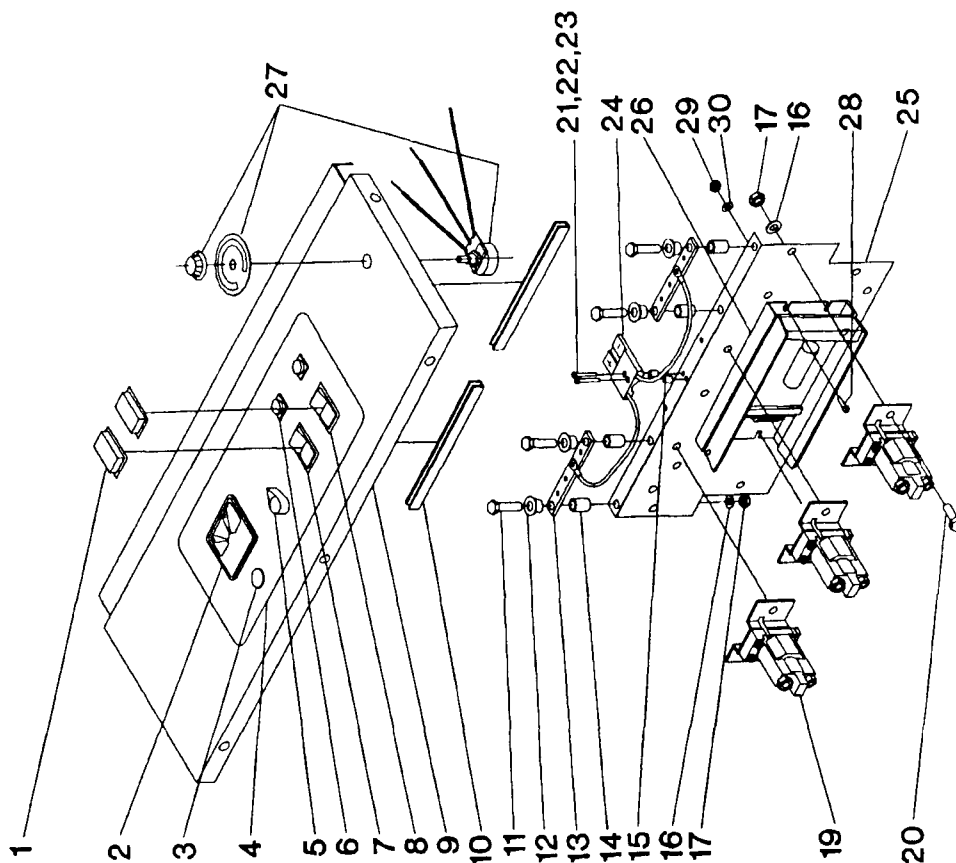
# KA-266EB BRUSH HEAD ASSEMBLY



**\*ENTIRE ASSEMBLY IS PART NO. 034508  
(DOES NOT INCLUDE BRUSHES)**

DET	PART NO.	DESCRIPTION	QUANT
1	003293	NUT, HEX—.375-16, ZN PLT	1
2	004214	WSHR LK .390ID.683OD.094TSPLT	10
3	053791	SPACER, STL—.657X.875, 2.50L	1
4	051485	SHAFT, SUPPORT—BRUSH HEAD	1
5	050979	WSHR FLT .625ID1.25OD.120T STL	1
6	053774	SPRING, COMP 1.09D 4.00L .135WD	1
7	024372	ASM, MTR&GEAR UNIT—.75HP, IMP	2
7	039276	BRUSH, MTR—FOR 024372 MOTOR	4
8	033418	WDMT, BRUSH HEAD—26" AUTO	1
9	033996	ASM, HUB—BRUSH DRIVE, RIGHT	1
10	051549	LABEL, INSTR—WRN, AUTO	1
11	003262	SCR CAP HEX HD .375-16X1.00L	10
12	051474	CLAMP, LOOP—.609 CLOSED I.D.	1
13	046425	SPACER, PHEN—.250X.437, .250L	1
14	001331	SCR TPG C PAN HD 10-24X.750L	3
15	055297	TUBE, FORMED—AUTO, SOLN, RIGHT	1
15	055299	TUBE, VINYL—.313X.500, 3.50L	1
16	051466	CLAMP, LOOP—.297 CLOSED I.D.	2
17	051514	TUBE, VINYL—.500X.750, 2.25L	2
18	033992	ASM, TUBE—SOLN, CNTR, FEED, 26"	1
19	047834	CLAMP, HOSE—.875 MAX DIA, WORM	4
20	055299	TUBE, VINYL—.313X.500, 3.50L	1
20	055298	TUBE, FORMED—AUTO, SOLN, LEFT	1
21	002237	SCR CAP HEX HD .250-20X.500L	4
22	053277	BRACKET, SOLN TUBE—.75X.75X1.8	2
23	032231	ASM, DRIVE—BRUSH, RIGHT	1
23	032232	ASM, DRIVE—BRUSH, LEFT RING	1
23	046740	RING—BRUSH DRIVE	2
24	048414	PLATE—BRUSH RING SUPPORT	2
25	001494	SCR CAP HEX HD .312-18X2.00L	2
26	005358	WSHR LK—.326ID.586OD.078T SPL	2
27	004509	WSHR FLT .344ID1.00OD.109T, BRS	2
28	046764	BRUSH SUPPORT	2
29	033995	ASM, HUB—BRUSH DRIVE, LEFT	1
29	053221	CASTING—BRUSH DRIVE W/CENTER	2
30	051405	BRACE, SUPPORT—BRUSH HEAD	1
31	004297	PIN, COTTER—.094X .750 LONG	2
32	032614	ASM, YOKE—BRUSH LIFT	1
33	004238	WSHR FLT .531ID1.00OD.071T STL	2
34	003363	NUT, HEX LOCK—.250-20, ZN PLT	4
35	053793	WIRE ROPE—.062 DIA X 10.50L	2
36	005482	SCR TPG F PAN HD 10-24X.875L	4
37	026922	BLOCK, TERMINAL—2 POLE, 70 AMPS	1
38	003359	NUT, HEX—.375-24, ZN PLT	12
39	004352	PIN, LOCK—.125 DIA WIRE	2
40	051486	PIN, STEEL—.375" BRUSH LOCK	2
41	048953	BALL JOINT	4
42	049473	BALL JOINT BODY	8
43	044656	KEY, SQUARE—.250 SQ, 2.500 LONG	2
44	003434	SCR SET CUP PT 10-24X.50SS	2
45	049631	STRAP—BRUSH RING	6
46	004513	WSHR FLT .281 ID.875OD.036T ZN	36
47	004326	RIVET, TUBE—.250 DIA, .719L	18
48	046425	SPACER, PHEN—.250X.437, .250L	6
49	046898	SPRING—RETAINING	2
50	004328	RIVET, TUBE—.141 DIA, .281L	4
51	046746	BRUSH LUG	6
52	020276	BRUSH, FLAT—13.50D, POLYPROP, WD	2
53	033809	ASM, ARM—GUIDE 26&32 BRUSH HD	4
53	052683	ROD STL—THR., .375-24X4.18L	4

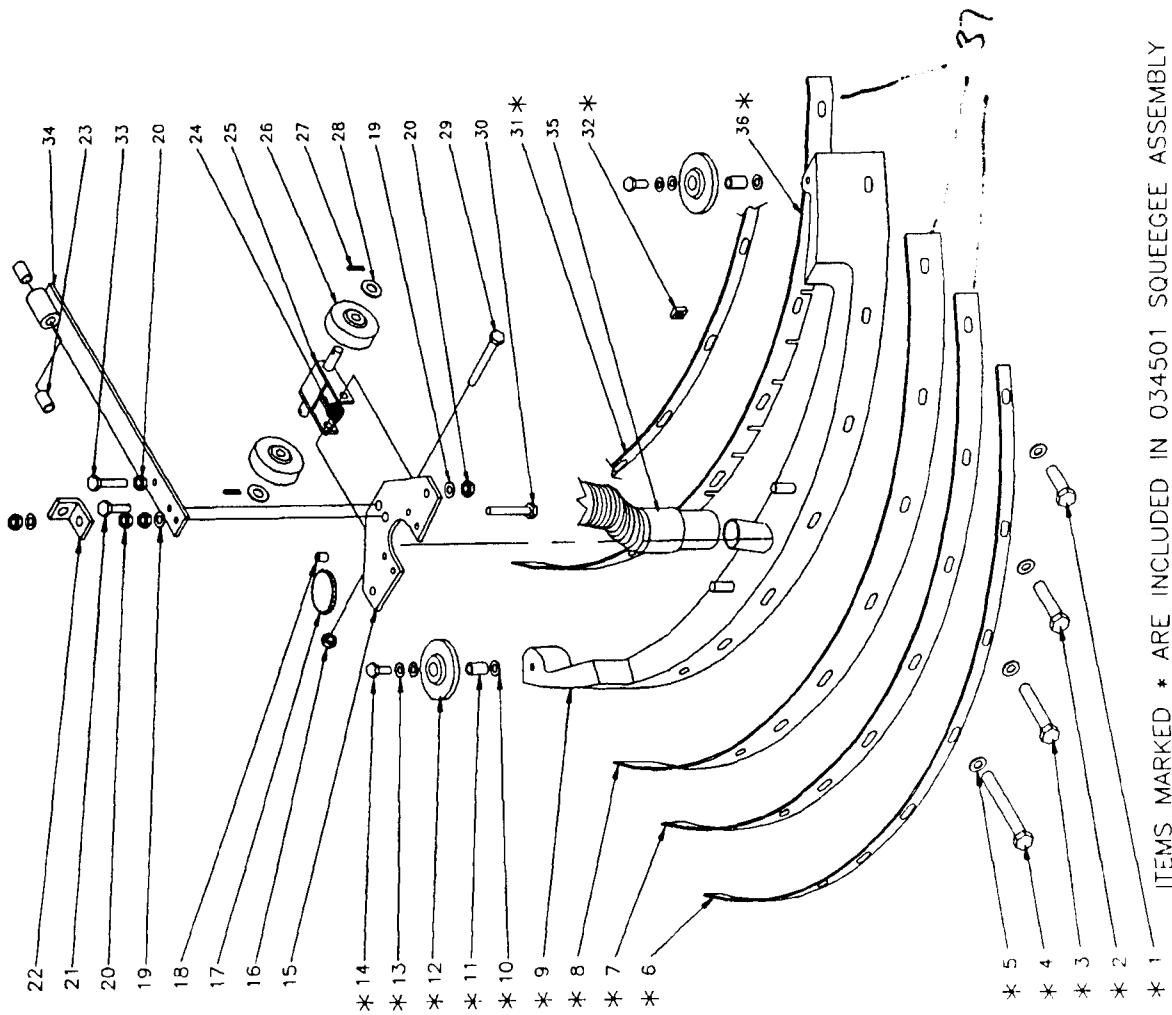
# KA-266EB INSTRUMENT & JUNCTION PANEL ASSEMBLIES



DET PART NO.	DESCRIPTION	QUANT
1	SWITCH PROTECTOR	2
2	VOLTMETER	1
3	BUTTON PLUG	1
4	LABEL, INSTR—OPN, AUTO CONT	1
5	KNOB—WATER CONTROL	1
6	LIGHT, INDICATOR—RED, 36VDC	2
7	SWITCH, RKR—SPST, 10A, 250V, 3/4H	1
8	SWITCH, RKR—SPST, 10A, 250V, 3/4H	1
9	PANEL, INSTR—26, ELEC SPD CNTRL	1
10	U-CHNL, PLSTC—RS 98251, 7.62 L	2
11	SCR CAP HEX HD .250-20X1.50L	4
12	WSHR SHLDR, 250ID, 562OD, 120T, NY	4
13	BAR, STL—, 187X.750X 4.00 LONG	2
14	SPACER, PLSTC—500X.625, .500L	4
15	SPACER, PHEN—, 250X.437, .250L	2
16	WSHR LK .262ID, 489OD, 062TSPLT	10
17	NUT, HEX—, 250-20, ZN PLT	10
19	SOLENOID—SWITCH, SPNO, 36VDC	3
20	SCR CAP HEX HD .250-20X.500L	6
21	SCR MACH RID HD 6-32X1.25L	2
22	WSHR LK .148ID, 250OD, 031TSPLT	4
23	NUT, HEX— 6-32, ZN PLT	4
24	CHARGER PLUG	1
25	PLATE, STL—JUNCTION PANEL CONTROL—VOLTAGE DC	1
27	POTENTIOMETER	1
28	SCR MACH RID HD 10-24X.500L	4
29	NUT, HEX— 10-24, ZN PLT	4
30	WSHR LK .204ID, 410OD, 025T EXT	4

KA-266EB  
TM-1305

# KA-266EB SQUEEGEE ASSEMBLY



ITEMS MARKED \* ARE INCLUDED IN 034501 SQUEEGEE ASSEMBLY

DET PART NO.	DESCRIPTION	QUANT
1	SCR CAP HEX HD .250-20X1.50L	2
2	SCR CAP HEX HD .250-20X2.50L	2
3	SCR CAP HEX HD .250-20X3.00L	2
4	SCR CAP HEX HD .250-20X3.50L	2
5	WSHR FLT .281ID.625OD.062T STL	8
6	BAR, STL--1.25X1.00,34,14 LONG	1
7	RUBBER, BACKUP--1.25X2.00,34,4L	1
8	RUBBER, SQUEEGEE--1.87X2.75,35L	1
9	CASTING, SQUEEGEE--26 AUTO, HV	1
10	WSHR FLT .344ID.750OD.060T STL	4
11	SPACER, STL--312X.437,.43L	2
12	WHEEL--4.00DIA., 438BORE., 688HB	2
13	WSHR LK .326ID.586OD.078TSPLT	2
14	SCR CAP HEX HD .312-18X1.00L	2
15	WDMT, PLATE--SQUEEGEE	1
16	NUT, HEX LOCK--.375-16, ZN PLT	1
17	KNOB	2
18	SCR SET CUP PT .375-16X.500L	4
19	WSHR LK .390ID.683OD.094TSPLT	3
20	NUT, HEX JAM--.375-16, ZN PLT	5
21	SCR CAP HEX HD .375-16X1.00L	1
22	BRACKET, ANGLE--1.25X1.25X1.00L	1
23	BRG, SLV--.500ID., .625OD., .750W	4
24	SPRING, TRSN 791D 1.09L .106WD	1
25	WDMT, BRACKET--SQUEEGEE WHEEL	1
26	WHEEL--3.00DIA., .380BORE., .875HB	2
27	PIN, COTTER--.094X1.000 LONG	2
28	WSHR FLT .406ID.625OD.036T STL	2
29	SCR CAP HEX HD .375-16X2.75L	1
30	SCR CAP HEX HD .375-16-2.50L	1
31	BAR, STL--1.25X1.00,31,31 LONG	1
32	NUT, SELF RETAINING--250-20	8
33	SCR CAP HEX HD .375-16X2.25L	1
34	WDMT, SQUEEGEE BAR--PIVOT TUBE	1
35	ASM, HOSE--VACUUM, GREY, 5FT	1
36	RUBBER, SQUEEGEE--1.25X1.75, 33L	1
37	WDMT, BRACKET--SQUEEGEE	1

# THE KENT LIMITED WARRANTY

---

Your Kent equipment which has been manufactured, tested and inspected in accordance with carefully specified engineering requirements, is warranted to be free from defects in material and workmanship. This warranty is, however, subject to the following qualifications, conditions, and limitations which are set forth to provide you and all users of the Kent equipment with information concerning the duration, extent, availability, and applicability of this Kent limited warranty, the procedure to be taken to obtain its performance, and other information concerning the Kent warranty policy.

## **The Kent Limited Warranty is extended to the original end user as follows:**

Automatic scrubber vacs and battery operated burnishers 3 year parts replacement and 1 year service labor warranty (see instruction manual for battery guarantee). Battery chargers are guaranteed by charger manufacturer for a period of 1 year.

Replacement parts guaranteed for 90 days from date of installation against defects in material and workmanship.

The 10 year poly component replacement warranty with 1 year service labor extends for a period of ten (10) years from the date of the original purchase of the Kent equipment by the original purchaser. This warranty will not cover damage attributable to the following:

- (1) Improper, unreasonable or negligent use or abuse of the equipment.
- (2) Use of equipment with hot water or high temperature above 130 degrees Fahrenheit (54 degrees centigrade).
- (3) "Warpage", "Creepage", or "Distortion" of part so long as the same does not interfere with normal operation.
- (4) Abrasions or punctures of the equipment.

The start date of the warranty coverage shall be the purchase date of the original end user or six months from the date the machine was shipped from the factory, whichever comes first.

## **PARTS OF KENT EQUIPMENT NOT COVERED BY WARRANTY**

Certain parts of Kent equipment require replacement in the ordinary course of use due to normal wear by reason of their characteristics. These are normal wear items such as cords, gaskets, switches, bumpers, carbon brushes, handle grips, bags, hoses, bearings, etc.

## **EXCEPTIONS AND EXCLUSIONS FROM WARRANTY**

This equipment is required to be used on electric current as indicated on the data plate. Otherwise damage, defects, malfunctions or other failures of the equipment arising from use on electric current not as indicated are excepted and excluded from this warranty. Defects, malfunctions, failure or damage of the equipment caused by improper, unreasonable or negligent use or abuse while in the possession of the purchaser are likewise excluded from this warranty. If repair is done on your equipment by anyone other than those designated as authorized to perform such work without first having obtained factory instructions, The Kent Company, at its sole option, may determine that this warranty will not apply and that reimbursement for such repair will not be made because of the failure to comply with such factory specified instructions.

## **PROCEDURE TO BE TAKEN TO OBTAIN PERFORMANCE OF WARRANTY REPAIR**

To secure repair of the equipment or any warranted parts under this warranty, the following procedure should be taken. The inoperative equipment or warranted parts, together with satisfactory evidence of the purchase date, must be delivered, with shipping and delivery charges prepaid, to one of the following:

- (1) The dealer from whom purchased;
- (2) Any Kent distributor's service department in the United States;
- (3) Any Kent authorized service station in the United States.

If you are unable to locate any of the foregoing, you may write or otherwise communicate with The Kent Company for instructions before repair service is performed by anyone else. In such event, The Kent Company will provide either the location of a closely available Kent distributor service department or Kent authorized service station or other factory instructions. Upon compliance with the above procedure, all warranted defects will be repaired, at no additional charge or costs to the customer, and the repaired product returned to the customer, with all shipping and delivery charges prepaid. In following the procedures above set forth, PLEASE MAKE CERTAIN to state the Kent model, type and serial number as shown on the dataplate of the equipment.

## **REPLACEMENT**

In the event of a defect, malfunction or failure of your Kent equipment or any warranted part to conform with this warranty, The Kent Company may, at its sole option and own expense, replace the equipment or any warranted part with another new identical or reasonably equivalent model or part in lieu of repairing the defect.

## **NO REFUND OF PURCHASE PRICE**

The Kent Company will not, as a matter of its warranty policy, refund the customer's purchase price.

## **WARRANTY REGISTRATION CARD FOR YOUR KENT EQUIPMENT AND REQUEST FOR INFORMATION**

Your Kent Company distributor from whom you purchased your equipment is responsible for the registration of your warranty with the factory. We ask that you cooperate with your distributor in supplying the necessary information on the warranty card so that we may better serve you. Any information or questions you may have concerning your Kent equipment or this warranty may likewise be secured from the factory. This warranty gives you specific legal rights, and you may also have other rights which vary from state to state.

## **THE KENT COMPANY**

**P.O. BOX 1665 ELKHART, INDIANA 46515**